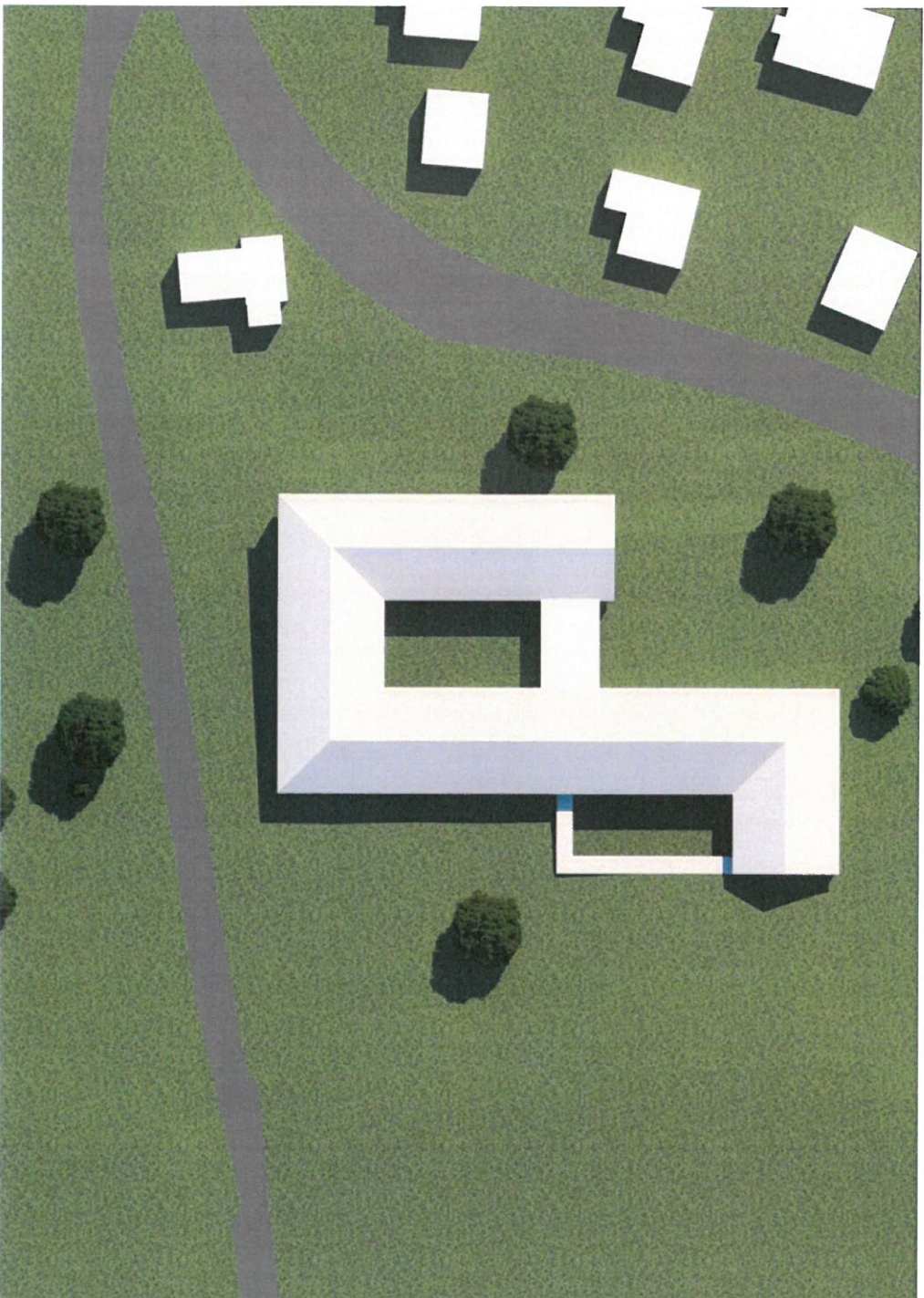


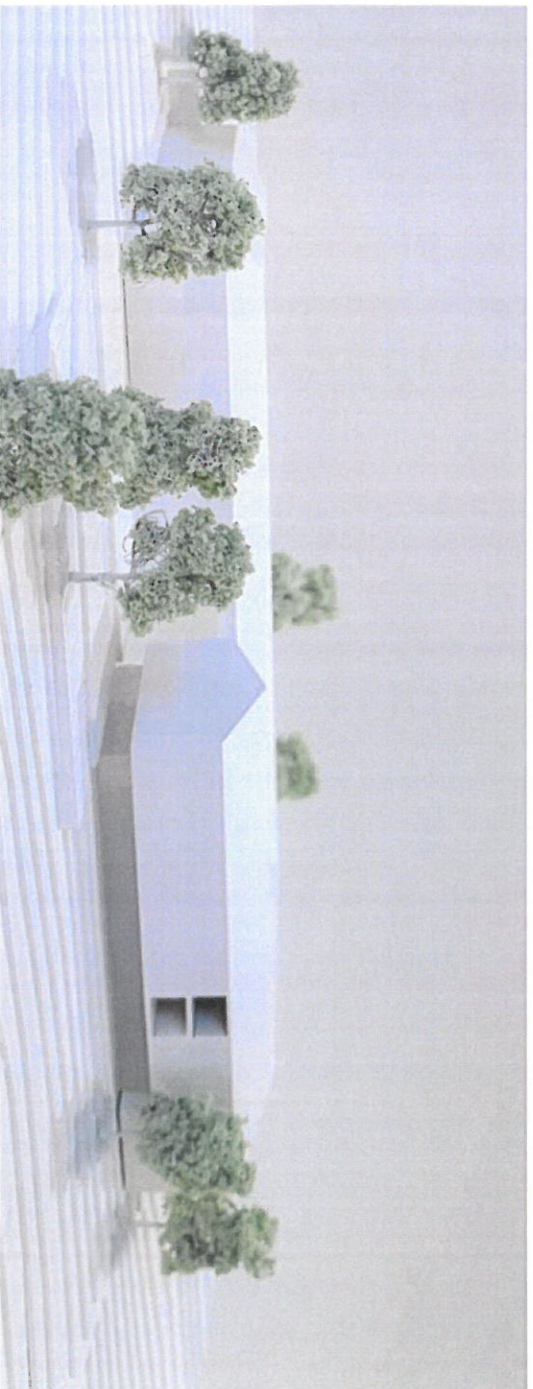
HÖSS AMBERG + PARTNER
ARCHITEKTEN mbB



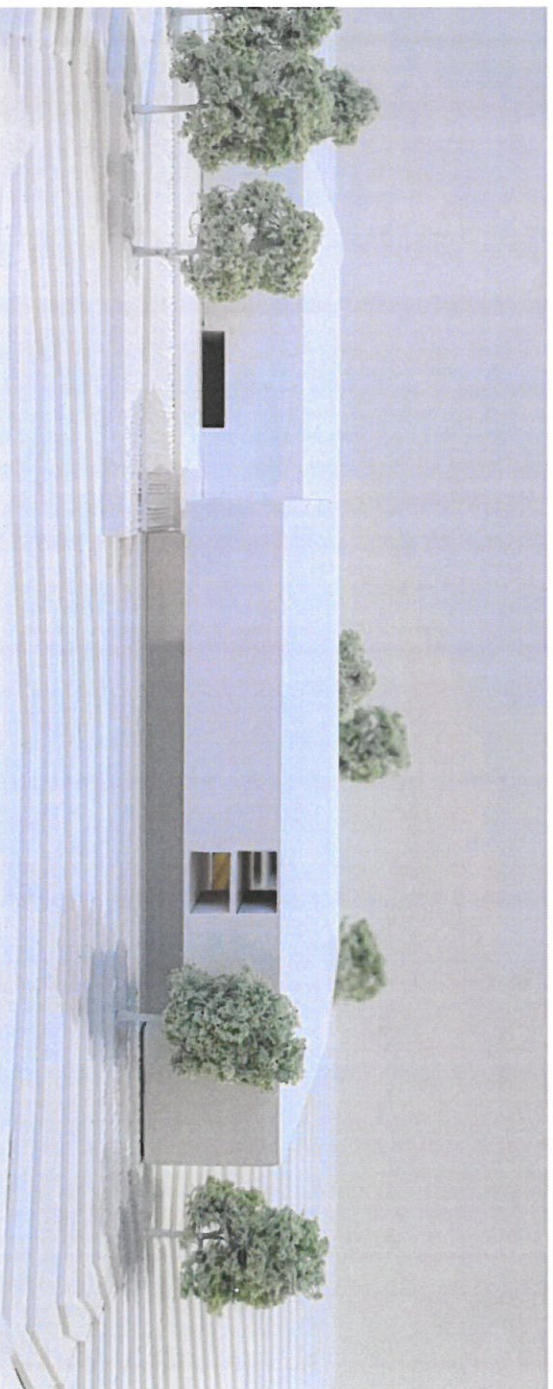
AUSARBEITUNG - HÖFE
VARIANTE 3

Neubau Marienheim
MARKT PEITING
AWO Bezirksverband OBB e.V.

HÖSS AMBERG + PARTNER
ARCHITEKTEN mbB



MODELLFOTOS
VARIANTE 3

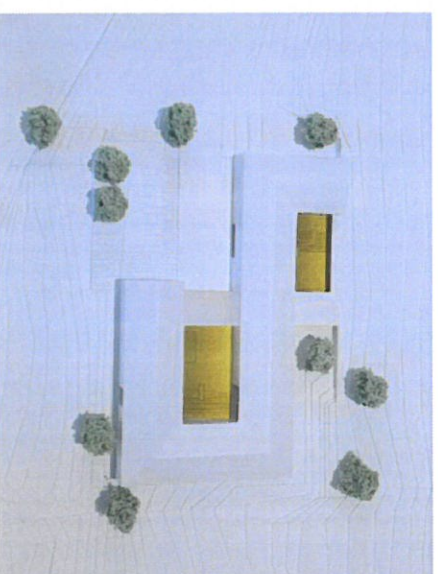
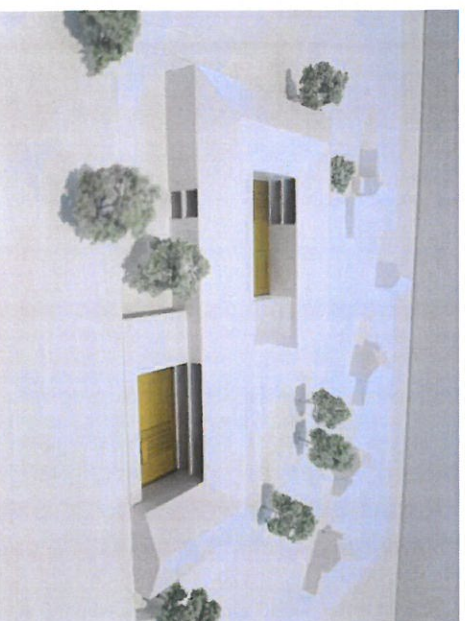


Neubau Marienheim
MARKT PEITING
AWO Bezirksverband OBB e.V.

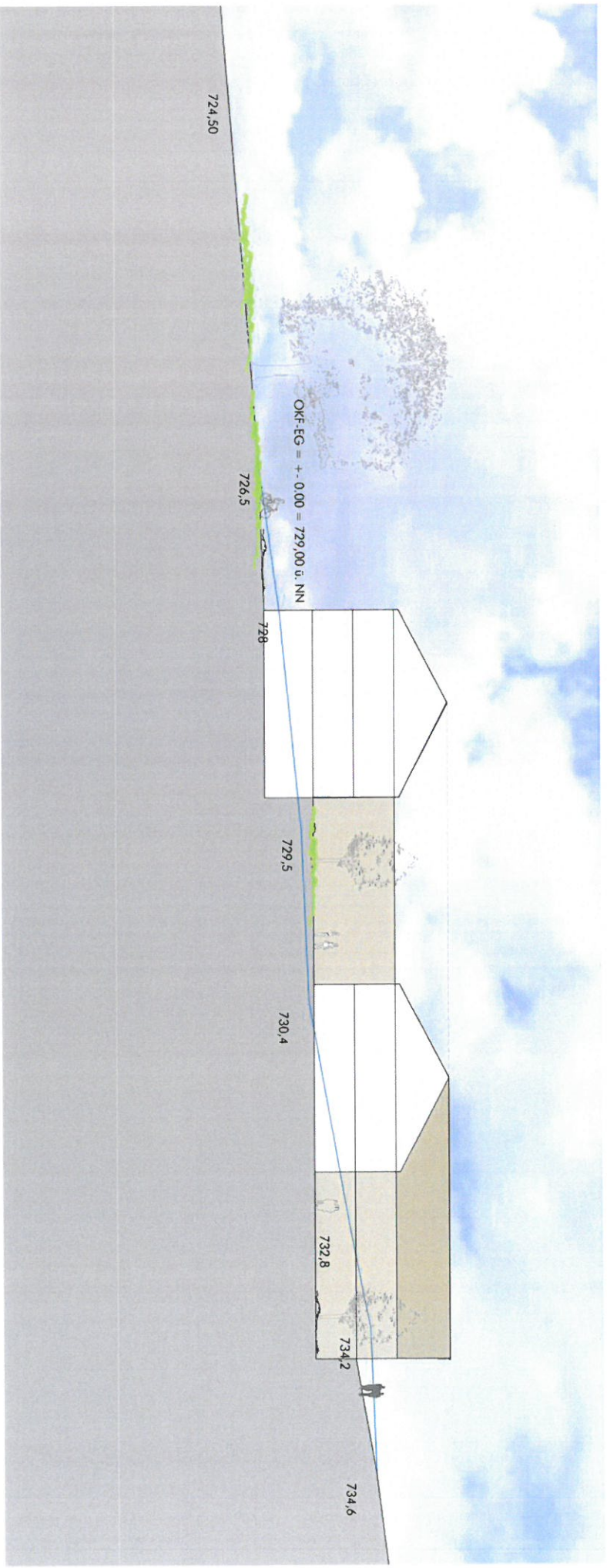
HÖSS AMBERG + PARTNER
ARCHITEKTEN mbB



MODELLFOTOS
VARIANTE 3



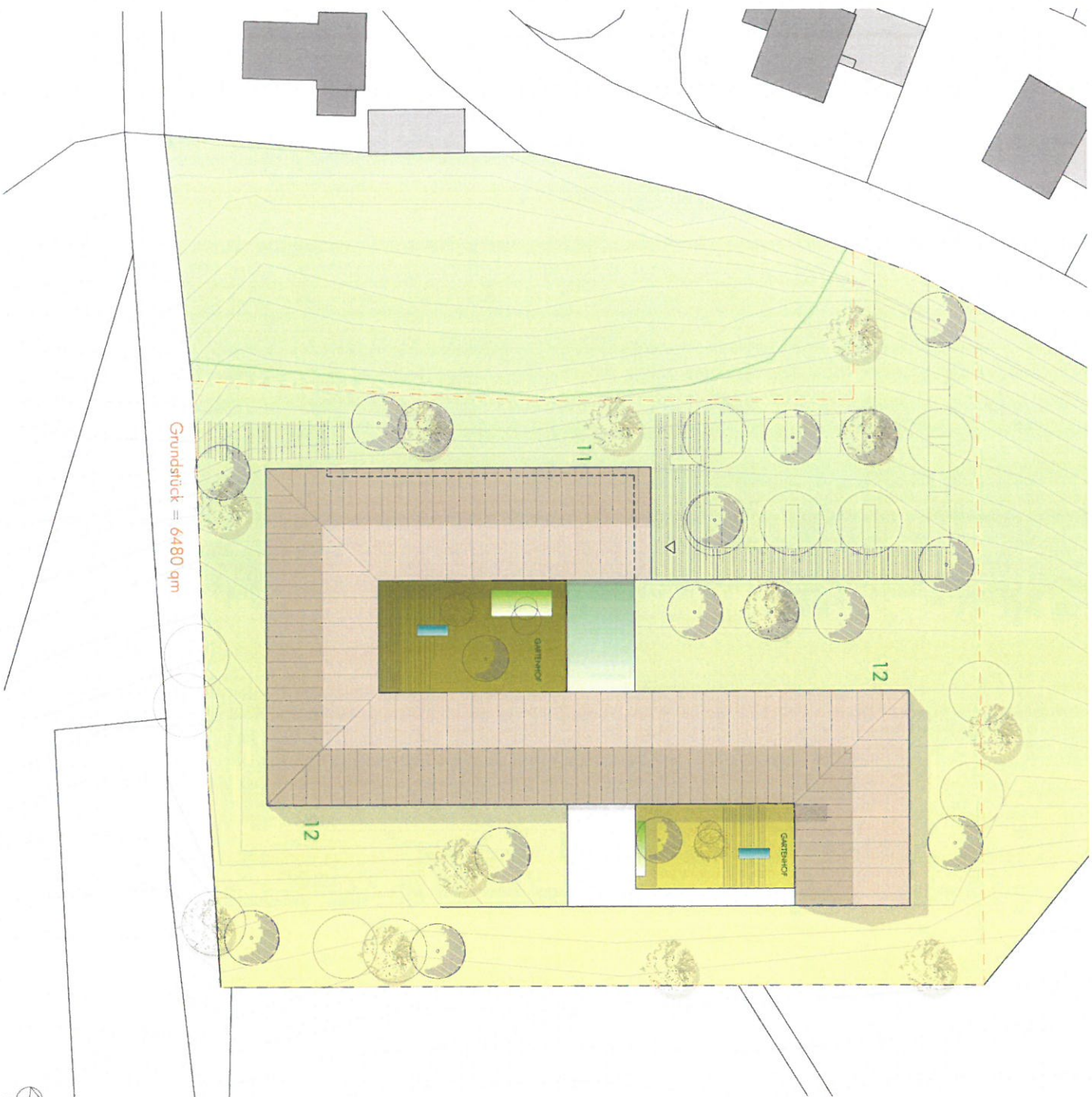
Neubau Marienheim
MARKT PEITING
AWO Bezirksverband OBB e.V.



SCHNITT - VARIANTE 3

HÖSS AMBERG + PARTNER
ARCHITEKTEN mbB

DACHAUF SICHT
VARIANTE 3



Neubau Marienheim
MARKT PEITING
AWO Bezirksverband OBB e.V.

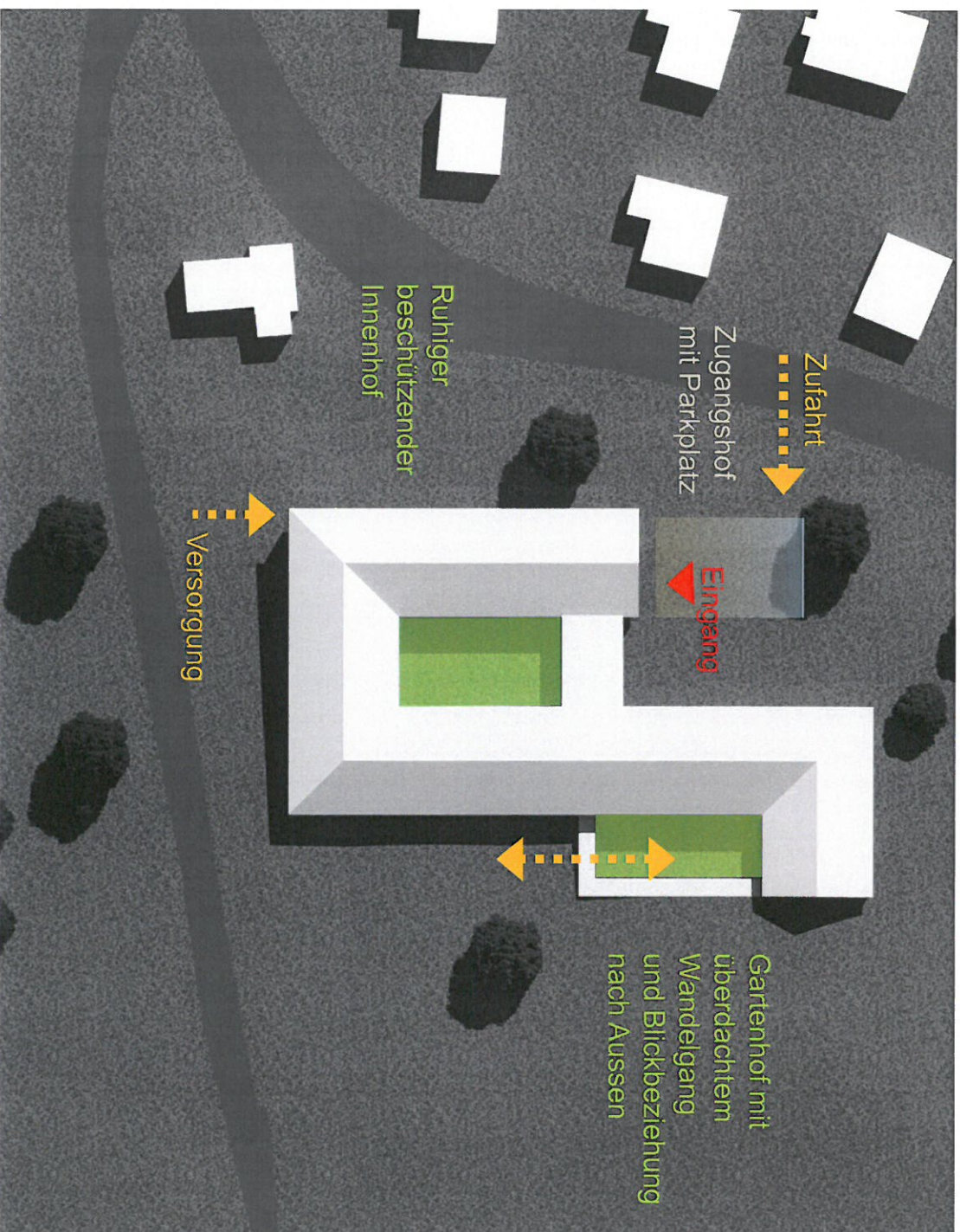
U + E + I
Verwaltung + Lager im Hanggeschoss (U)
Bewohner: ca. 70 Personen
(6 Gruppen mit je 4 x 12 + 2 x 11 Bewohnern = 70)



1. OBERGESCHOSS +
2. OBERGESCHOSS
VARIANTE 3

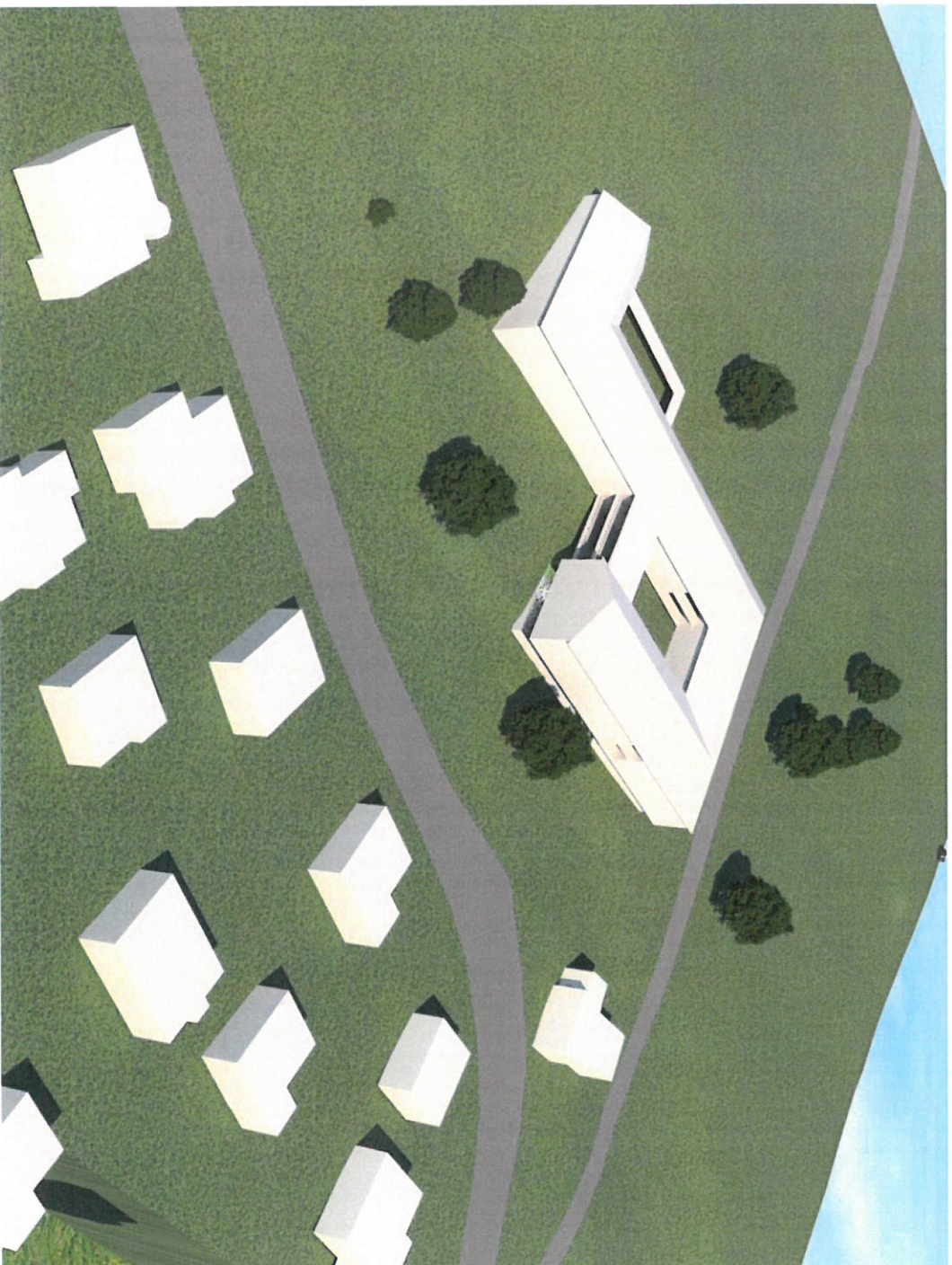
EINGANGSGESCHOSS
VARIANTE 3





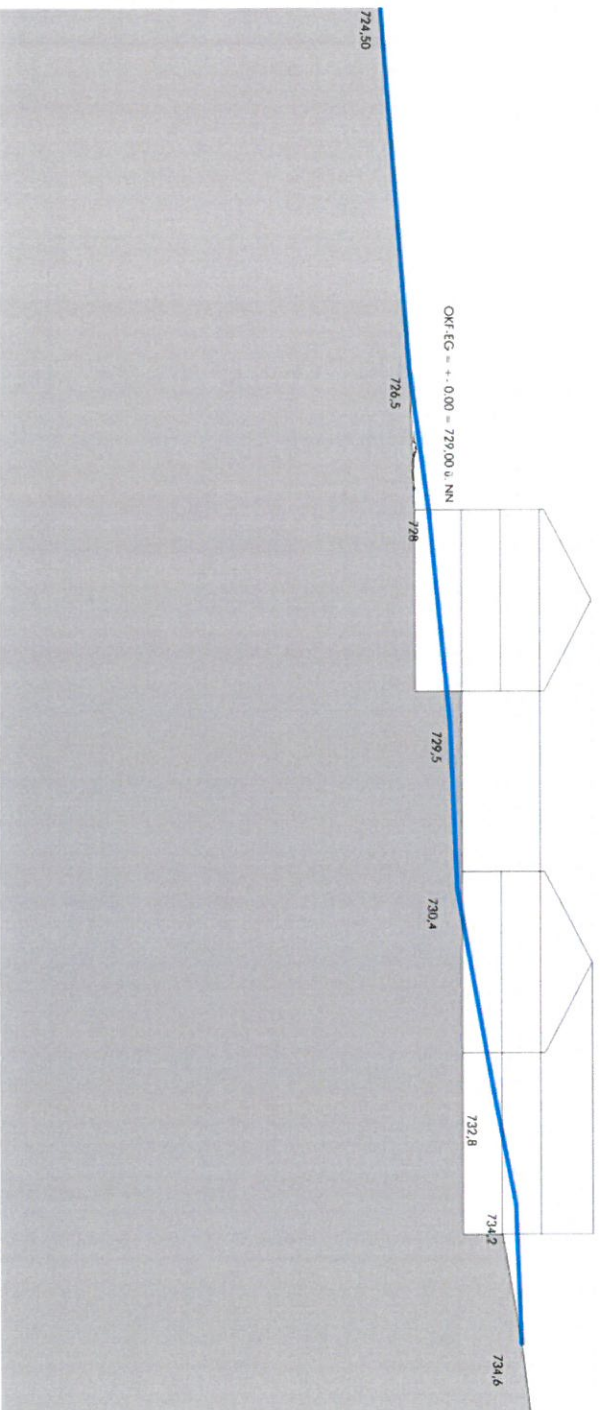
AUSSENÄRÄUME + ERSCHLIESSUNG VARIANTE 3

HÖSS AMBERG + PARTNER
ARCHITEKTEN mbB

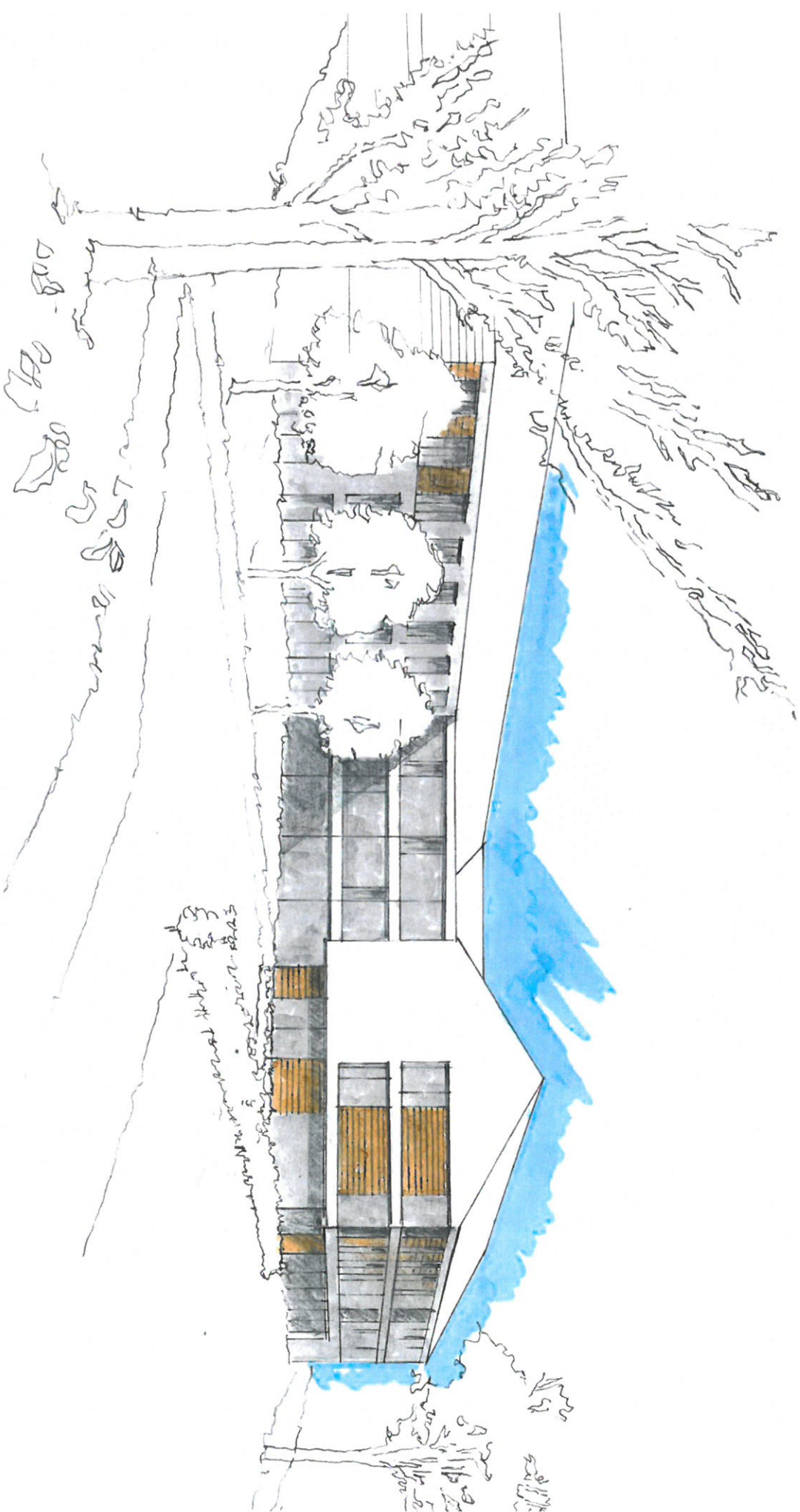


AUSARBEITUNG
VARIANTE 3

Neubau Marienheim
MARKT PEITING
AWO Bezirksverband OBB e.V.



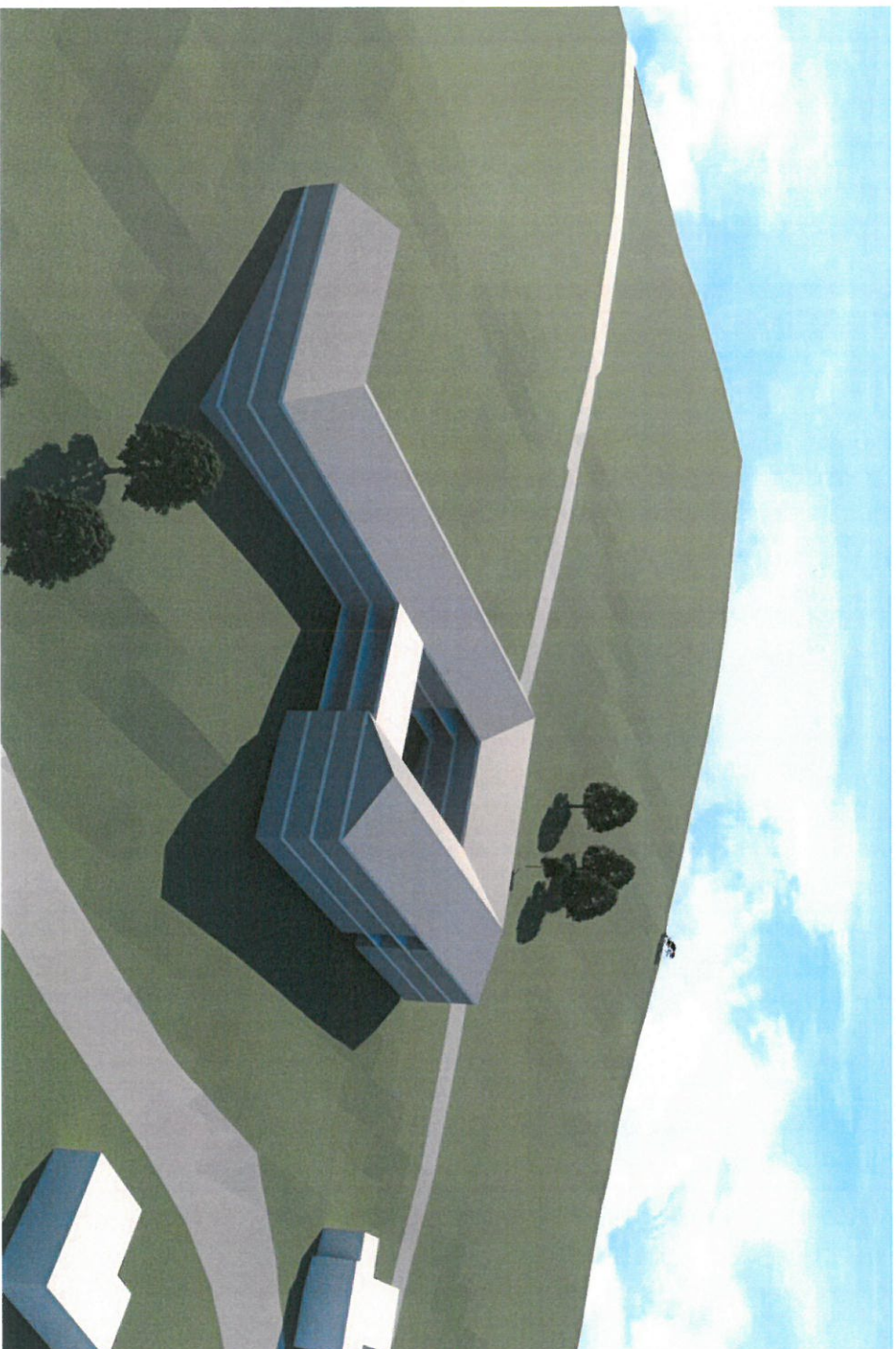
GELÄNDESCHNITT
VARIANTE 3



VARIANTE 3

Neubau Marienheim
MARKT PEITING
AWO Bezirksverband OBB e.V.

HÖSS AMBERG + PARTNER
ARCHITEKTEN mbB



GELÄNDESTUDIE 1
VARIANTE 3

Neubau Marienheim
MARKT PEITING
AWO Bezirksverband OBB e.V.